

INDUSTRIAL BELTING



INDUSTRIAL BELTING

717-871-0994

Fax 717-871-0995

bdhbelt.com

durolink@aol.com

O-RING
DRIVE BELTS



BELT & CHAIN GUIDES

DURODRIVE BELTS



**ENGINEERED FOR
POWER TRANSMISSION & MATERIAL HANDLING
APPLICATIONS**

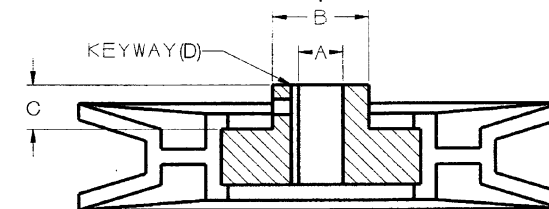
We are...
BDH INC.
INDUSTRIAL BELTING

6975A River Road
Conestoga, PA 17516 (USA)

GLASS REINFORCED NYLON PULLEYS

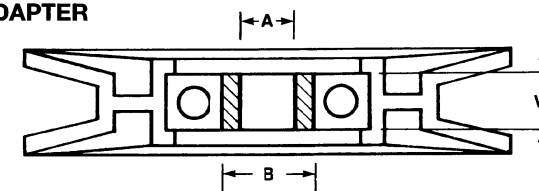
- Lower coefficient of friction reduces wear, increases belt life, lowers maintenance costs.
- Thermoplastic resists oils, solvents, many acids, and is fully corrosion resistant.
- One piece, molded construction pulleys are immune to rivet fatigue and separation that is often found in two piece metal pulleys.
- Pulleys are precision molded concentrically around bearings, +/- 0.007 T.I.R.
- All bearings are sealed A.B.E.C.-1 with sintered metal hubs.
- For special applications, stainless steel bearings with Viton seals are available upon request.

DRIVE ADAPTER All Drive Adapters include a 10-32 Nylock Set Screw



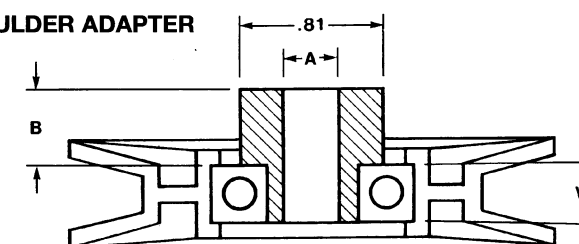
PART NO.	A	B	C	D
DA-01	.375	0.81	.375	.125
DA-02	.500	1.00	.375	.188

BORE ADAPTER



PART NO.	A	B	W
BA-01	0.375	17mm	12mm
BA-015	12mm	17mm	12mm
BA-02	0.500	17mm	12mm
BA-03	10.5mm	17mm	12mm

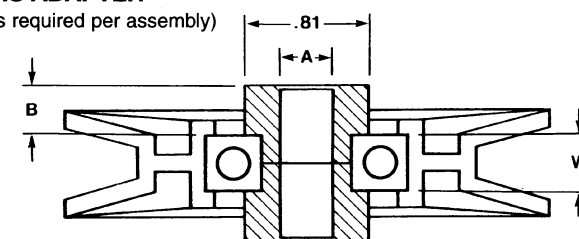
SHOULDER ADAPTER



PART NO.	A	B	W
SA-00	0.313	0.39	12mm
SA-001	0.313	0.79	12mm
SA-015	0.375	0.20	12mm
SA-02	0.375	0.27	12mm
SA-025	0.375	0.31	12mm
SA-03	0.375	0.41	12mm
SA-04	0.375	0.46	12mm
SA-06	0.375	0.51	12mm
SA-065	12.5mm	0.51	12mm
SA-07	0.375	0.59	12mm
SA-08	0.375	0.76	12mm
SA-10	10.5mm	0.30	12mm
SA-11	0.250	0.30	12mm
SA-20	0.500	0.27	12mm
SA-25	0.500	0.51	12mm
SA-30	0.500	0.76	12mm

CLEVIS ADAPTER

(2 units required per assembly)

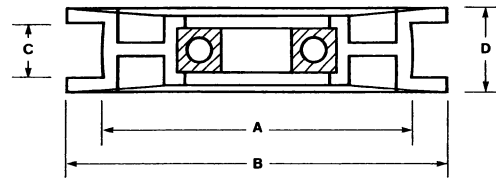


PART NO.	A	B	W
CA-01	0.375	0.27	12mm
CA-02	0.500	0.27	12mm
CA-05	0.380	0.51	12mm
CA-06	0.500	0.51	12mm

Standard adapters are sintered iron.
Zinc plated inserts, metric or special
sizes available upon request.

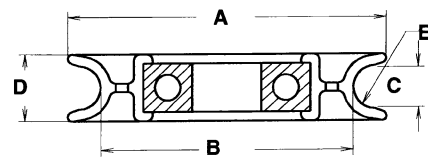
717-871-0994 • Fax 717-871-0995 • bdhbelt.com • durolink@aol.com

FLAT IDLER PULLEYS



PART NO.	A	B	C	D	CROWN	BORE
FIP1750-0.75	1.75	2.22	0.75	0.93	0.016	17mm
FIP1875-0.50	1.88	2.12	0.51	0.70	0.012	17mm
FIP1875-0.75	1.88	2.00	0.75	0.97	0.016	17mm
FIP1875-1.38	1.88	2.09	1.38	1.56	0.016	17mm
FIP2000-1.02	2.00	2.35	1.00	1.15	0.020	17mm
FIP2250-0.75	2.25	2.72	0.75	0.93	0.016	17mm
FIP2500-0.75	2.50	2.97	0.75	0.93	0.016	17mm
FIP2500-1.00	2.50	2.97	1.00	1.18	0.020	17mm
FIP2750-0.75	2.75	3.22	0.75	0.93	0.016	17mm
FIP2750-0.86	2.75	3.19	0.86	1.05	0.018	17mm
FIP2750-1.00	2.75	3.22	1.00	1.18	0.020	17mm
FIP3000-0.75	3.00	3.50	0.75	1.01	0.016	17mm
FIP3000-1.01	3.00	3.47	1.01	1.18	0.020	17mm
FIP3120-0.75	3.12	4.00	0.75	1.11	0.016	17mm
FIP3500-0.75	3.50	4.12	0.75	0.98	0.016	17mm
FIP3500-0.97	3.50	3.97	0.97	1.15	0.020	17mm
FIP4000-0.72	4.00	4.60	0.72	1.06	0.016	17mm
FIP4000-0.86	4.00	4.75	0.86	1.34	0.018	17mm
FIP4000-1.00	4.00	4.62	1.00	1.18	0.020	17mm
FIP4500-0.96	4.50	4.96	0.96	1.13	0.020	17mm
FIP5000-1.25	5.00	5.88	1.25	1.56	0.030	17mm
FIP5500-1.00	5.50	6.00	1.00	1.26	0.020	17mm
FIP6000-0.75	6.00	6.50	0.75	0.99	0.016	17mm
FIP6000-1.00	6.00	6.50	1.00	1.28	0.020	17mm

ROUND BELT IDLER PULLEYS

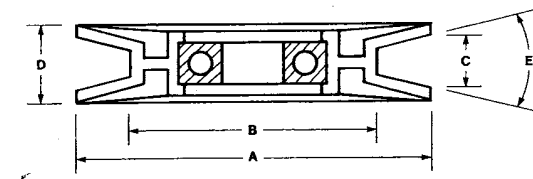


PART NO.	A	B	C	D	E	BORE
RIP2125-.180	2.13	1.63	0.34	0.50	R.170	15mm
RIP2500-.190	2.50	1.88	0.38	0.65	R.195	17mm
RIP3000-.190	3.08	2.44	0.38	0.65	R.195	17mm
RIP3500-.190	3.50	2.88	0.38	0.65	R.195	17mm
RIP4000-.190	4.00	3.38	0.38	0.65	R.195	17mm

Unless otherwise specified, all dimensions are in inches.
Dimensions are subject to change without notice.

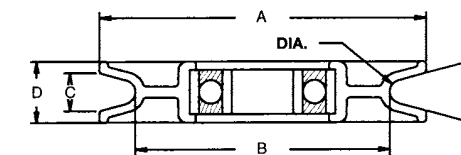
For sizes not shown, please call.

V-BELT IDLER PULLEYS



PART NO.	A	B	C	D	E	BELT SIZE	BORE
VIP2000-2.112	2.00	1.36	0.37	0.62	32 DEG.	A	12MM
VIP2500-2.740	2.50	1.75	0.51	0.74	32 DEG.	A	17MM
VIP2875-3.190	2.87	1.75	0.49	0.74	32 DEG.	A	17MM
VIP3000-3.316	3.00	1.96	0.49	0.70	32 DEG.	A	17MM
VIP3480-3.765	3.48	2.58	0.50	0.68	34 DEG.	A	17MM
VIP3560-3.585	3.56	2.50	0.58	0.78	34 DEG.	A	17MM
VIP4000-4.316	4.00	2.62	0.50	0.87	34 DEG.	A	17MM
VIP3000-3.105	3.00	1.79	0.64	0.81	34 DEG.	B	17MM
VIP3470-3.575	3.47	2.26	0.64	0.81	34 DEG.	B	17MM
VIP4000-4.105	4.00	2.79	0.64	0.81	34 DEG.	B	17MM
VIP5000-5.200	5.00	3.00	0.88	1.12	36 DEG.	B&C	17MM
VIP5000-5.403	5.00	3.75	0.64	0.87	34 DEG.	B	17MM
VIP6000-6.200	6.00	4.00	0.88	1.12	36 DEG.	B&C	17MM
VIP6000-6.403	6.00	4.79	0.64	0.87	34 DEG.	B	17MM
VIP7000-6.465	7.00	5.00	0.93	1.15	34 DEG.	B & C	17MM

CABLE IDLER PULLEYS



PART NO.	A	B	C	D	E	DIA.	BORE
CIP2500-.188	2.50	1.75	0.36	0.65	30 DEG.	3/16	17MM
CIP2500-.250	2.50	1.75	0.41	0.65	30 DEG.	1/4	17MM
CIP3000-.188	3.00	2.20	0.36	0.65	30 DEG.	3/16	17MM
CIP3000-.250	3.00	2.20	0.41	0.65	30 DEG.	1/4	17MM
CIP3500-.188	3.50	2.75	0.36	0.65	30 DEG.	3/16	17MM
CIP3500-.250	3.50	2.75	0.41	0.65	30 DEG.	1/4	17MM
CIP4000-.188	4.00	3.20	0.36	0.65	30 DEG.	3/16	17MM
CIP4000-.250	4.00	3.20	0.41	0.65	30 DEG.	1/4	17MM
CIP4500-.188	4.50	3.70	0.36	0.65	30 DEG.	3/16	17MM
CIP4500-.250	4.50	3.70	0.41	0.65	30 DEG.	1/4	17MM
CIP5000-.188	5.00	4.20	0.36	0.65	30 DEG.	3/16	17MM
CIP5000-.250	5.00	4.20	0.41	0.65	30 DEG.	1/4	17MM